


Austin Peay State University Aviation Science: Concentration Rotor-Wing

[Aviation Science](#)



- 
- A black helicopter is shown in flight over a dense green forest. The helicopter is viewed from a side-on perspective, slightly from below. Its landing lights are illuminated, casting a bright glow. The background is a soft, hazy landscape of trees under a twilight sky.
- About Me
 - 24 Year Army Veteran
 - Army Aviator
 - 14 Years as Army Contract Instructor Pilot
 - Army Instructor Pilot since 1983
 - CFI/II since 2008

What the Program Is

- Four Year Program from an Institution of Higher Learning (IHL)
- Students will graduate with:
 - B.S. in Aviation Science
 - Commercial Pilot Rotorcraft Helicopter Certificate
 - Instrument Rating
 - Certified Flight Instructor Certificate
 - Certified Flight Instructor Instrument Rating

Flight Training

- Flight training will be conducted by instructors employed by the University
- Flight training will be conducted on and around Clarksville Regional Airport (KCKV, Outlaw Field)
- Currently leasing two Guimbal Cabri G2s and two Robinson R44s
- The University purchased its first aircraft, another Guimbal G2 this spring

Career Opportunities

- Immediately after graduation
 - Flight Instruction
 - Charter
 - Aerial Photography
 - Law Enforcement (current sworn officer)
 - News
- Around 1000 hours
 - Sightseeing/Aerial tours
- Around 1500 hours
 - Medevac
 - Petroleum Industry

Guimbal G2 Cabri



[Cabri Hover](#)

[First Hover](#)

[Auto](#)

Robinson R44 Raven II



[Hover](#)

[Auto](#)

R44 Advanced Aviation Training Device



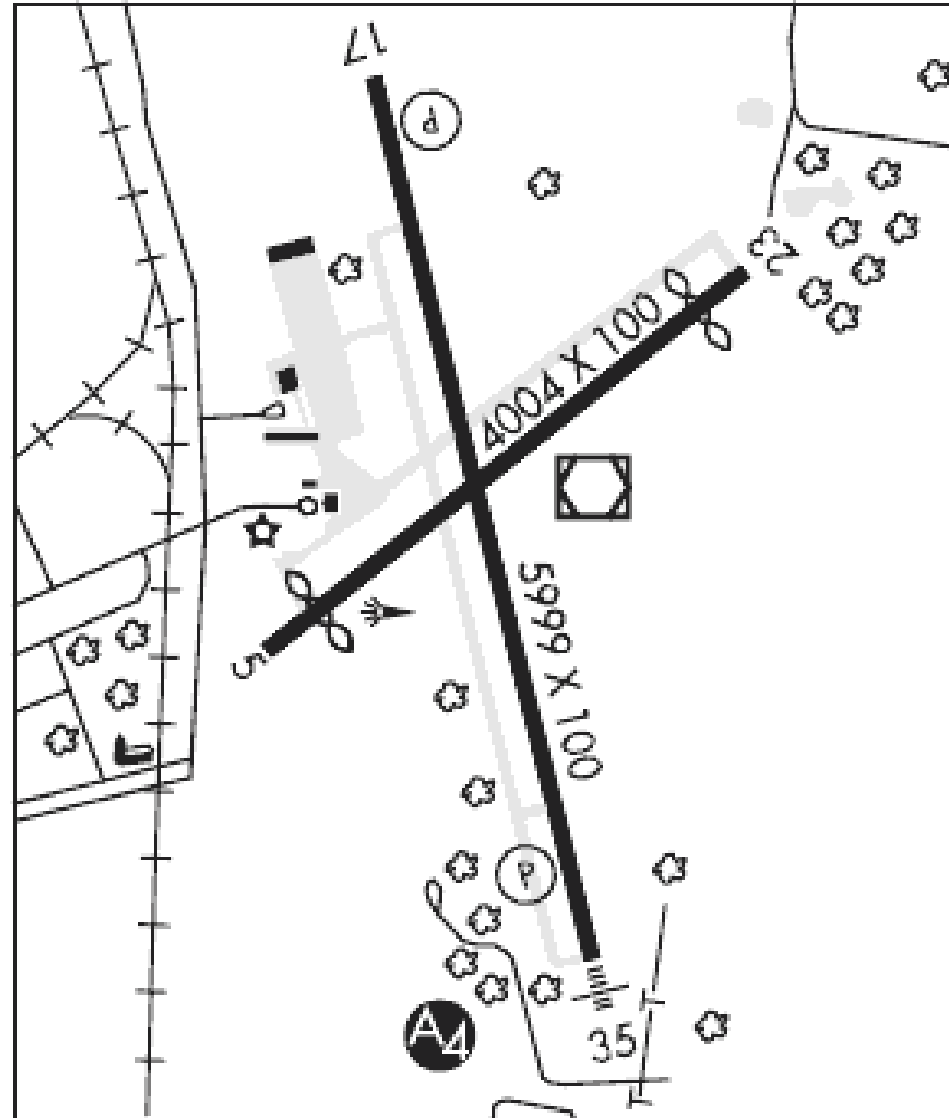
- [Platinum AATD](#)



Clarksville Regional Airport (KCKV)



Clarksville Regional Airport (KCKV)



Clarksville Regional Airport (KCKV)

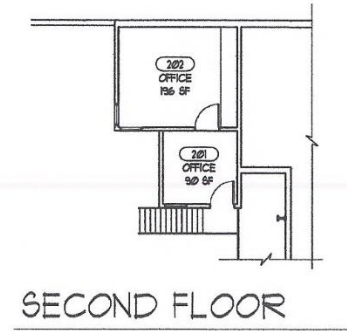
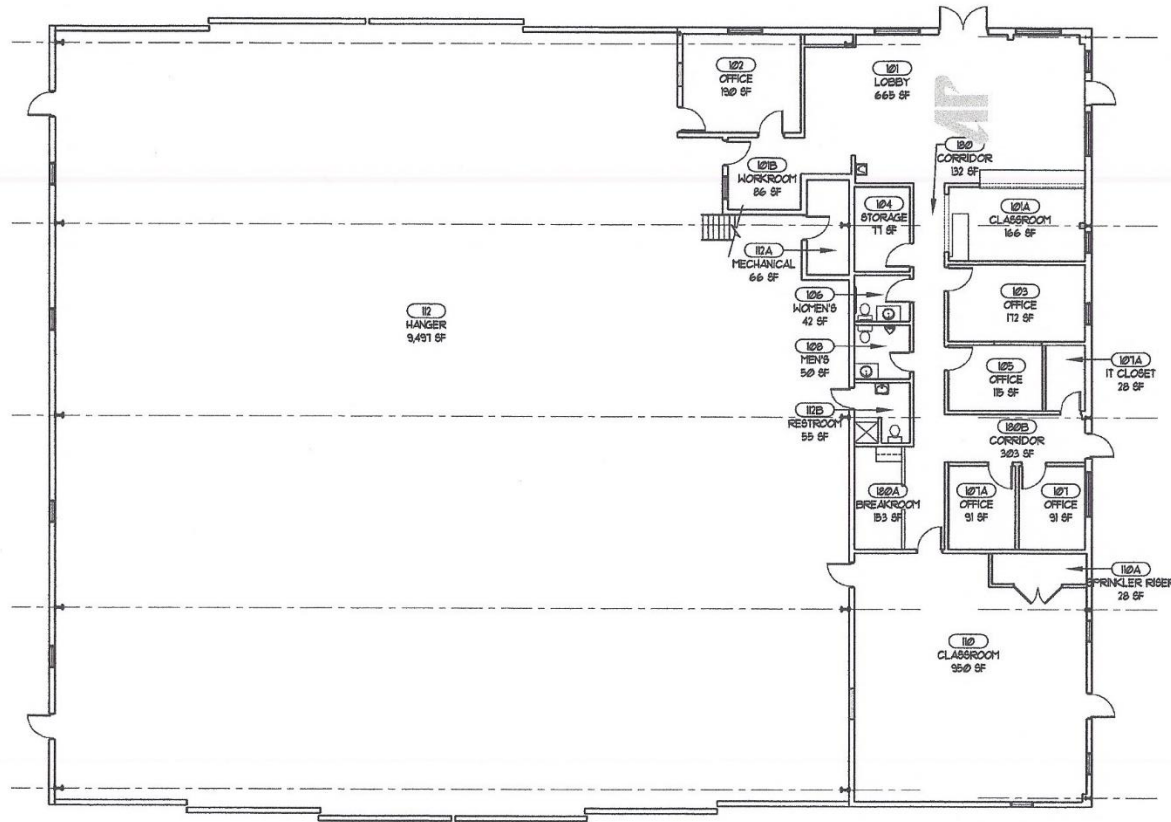


Clarksville Fire Rescue
Station Seven

Life Flight

Hangar Five

Hangar 5 Floorplan



1 PROPOSED NEW WORK PLAN
 $\frac{1}{16}'' = 1'-0''$

Hangar 5



Clarksville Regional Airport (KCKV)



B.S. AVIATION SCIENCE - ROTOR WING FIVE SESSION COURSE ROTATION PLAN

YEAR ONE				YEAR TWO				YEAR THREE				YEAR FOUR			
RUBRIC	COURSE NUMBER	COURSE NAME	CREDIT HOURS	RUBRIC	COURSE NUMBER	COURSE NAME	CREDIT HOURS	RUBRIC	COURSE NUMBER	COURSE NAME	CREDIT HOURS	RUBRIC	COURSE NUMBER	COURSE NAME	CREDIT HOURS
FALL I				FALL I				FALL I				FALL I			
AVI	1000	Intro to Aviation Science	3	AVI	2120	Instrument Flight Lab I	2	AVI	3040	Air Traffic Control	3	AVI	4040	Mountain Flight Operation	3
APSU	1000	Intro to University	1	HIST	2010	American History I	3	AVI	3060	Rotor-Wing Aircraft Design	3	ELECTIVE		Upper Division (3000-4000)	3
MATH	1710	College Algebra	3	MGT	1110	Introduction to Business	3	AVI	3140	Certified Flight Instructor Lab I	2 ^B				
FALL II				FALL II				FALL II				FALL II			
AVI	1020	Aviation Regulations	3	AVI	2140	Instrument Flight Lab II	2 ^B	AVI	3080	Aviation Meteorology	3	AVI	4200	Aviation Capstone	3
AVI	1040	Private Pilot Operations	3	HIST	2020	American History II	3	AVI	3090	Prime Mover Technologies	3				
				GEOG	1015	Physical Geography	3	AVI	4100	Certified Flight Instructor Lab II	2 ^B				
SPRING I				SPRING I				SPRING I							
AVI	1060	Flight Navigation	3 ^A	AVI	2020	Commercial Flight Operations	3 ^A	AVI	4000	Certified Flight Instructor Instrument	3 ^A				
ENGL	1010	English Composition I	3	PHYS	1010/1011	Understanding Physical World w Lab	4	ELECTIVE		Natural Science with Lab	4				
SPRING II				SPRING II				SPRING II							
AVI	1100	Rotor-Wing Private Pilot Lab I	2	AVI	3000	Flight Safety Management	3	AVI	4120	Certified Flight Instructor Instrument Lab	2 ^B				
AVI	2000	Instrument Flight Operations	3 ^A	AVI	3100	Commercial Flight Operations Lab I	2	ELECTIVE		Humanaties/Fine Arts	3				
ELECTIVE		Humanaties/Fine Arts	3	AVI	3070	Certified Flight Instructor	3 ^A	ENGL	2330	Topics in World Literature	3				
SUMMER				SUMMER				SUMMER							
AVI	2100	Rotor-Wing Private Pilot Lab II	2 ^B	AVI	3120	Commercial Flight Operations Lab II	2	AVI	4020	Night Vision Systems	3				
COMM	2045	Public Speaking	3	AVI	3020	Aerodynamics	3	ELECTIVE		Upper Division (3000-4000)	3				
ENGL	1020	English Composition II	3	PSYC	1030	Introduction to Psychology	3								

Note A - FAA Knowledge Test

Note B - FAA Pratical Test

For Electives/General Education Core See: <https://www.apsu.edu/academic-course-and-program-development/university-wide-degree-requirements.php>

FAA Part 61 or Part 141 Flight Training

- We have obtained Provisional Part 141 certification for all five of our courses (Private, Commercial, CFI, and CFII)
- Part 141 certification is REQUIRED for students to use Federal student aid (Title IV Funding)
 - Title IV funds include Direct Subsidized/Unsubsidized Loan, Direct Graduate PLUS Loan, Direct PLUS Loan, Federal Pell Grant, Federal Supplemental Educational Opportunity Grant (SEOG), and Federal Perkins Loan

Part 141 Flight Hours, with Advanced Flight Training Device

Part 141 Flight Hours, with Advanced Flight Training Device											
Labs	Total Hours	Instructional	Solo	PIC	Hood/Simulated IMC	Night	Cross Country	FAA Eval	Cabri	R44	AATD
Rotor-Wing Private Pilot Lab I	18.0	17.5	0.5	0.5			4.0		18.0		
Rotor-Wing Private Pilot Lab II	19.5**	15.0	4.5	4.5		4.0	8.5	2.5	14.5	5.0	
Instrument Flight Lab I	17.5	17.5		17.5	17.5		17.5		10.5		7.0
Instrument Flight Lab II	20.0**	20.0		20.0	20.0		20.0	2.5		13.0	7.0
Commercial Flight Operations Lab I	20.0	18.0	2.0	20.0	2.6	2.0	4.0		20.0		
Commercial Flight Operations Lab II	27.5#	17.0	10.5	27.5	2.8	4.1	11.0	2.5	11.4	16.1	
Certified Flight Instructor Lab I	13.5*	13.5		13.5			1.5		13.5		
Certified Flight Instructor Lab II	14.0**	14.0		14.0		1.5	2.0	2.5	5.6	8.4	
Certified Flight Instructor/Instrument Lab	17.0**	17.0		17.0	6.0		17.0	2.0		17.0	
Total	167.0	149.5	17.5	134.5	48.9	11.6	85.5	12.0	93.5	59.5	14.0
* Includes FAA Checkride											
# Appropriate FAA Written Knowledge Exam must be completed prior to checkride											

Current/Projected Staff

- Program Director/Chief Pilot (Me)
- Flight/Ground Instructor
- Flight/Ground Instructor
- A & P/AI (Mr. Jerry Gray)
- Flight Operations Administrative Assistant
- 4 Part-Time Adjunct Instructors

Program Growth

- 2018-2019
 - Six students started of which two rolled into 2019
- 2019-2020
 - Ten students started Private Pilot Flight Lab I
 - This is considered our first cohort
- 2020-2021
 - Nine students are currently enrolled in AVI 1000
 - Three additional students are on a waiting list due to VA 85/15 compliance
 - This is our second cohort
- 2021-2022
 - 12 students currently enrolled in AVI 1000

QUESTIONS

