

How to use this map

Campus locations, below, are listed alphabetically. After each listing there is a building abbreviation and room number or area where you can find the department. Buildings and their abbreviations are located on the map side of this brochure.

Still can't find your way? You can call or go to the information desk in the Morgan University Center to get information or help finding a department.

From any on-campus phone: 6600

From off-campus or mobile phones: (931) 221-6600

Hours are

Monday-Thursday ...8 a.m. to 8 p.m.

Friday8 a.m. to 6 p.m.

Saturday11 a.m. to 2 p.m.

SundayClosed

Summer hours8 a.m. to 4:30 p.m., Monday-Friday

You can find phone numbers, people and other information on the Web: go to www.apsu.edu, then click "directory."

Emergency - Dial 911

For non-emergency assistance or suspicious activity on campus, contact Campus Police at 221-7786 or online at www.apsu.edu/police.

Buildings, Departments and Offices

| | |
|--|--------------------|
| Academic Affairs | BR, 109 |
| Academic Alert | MX, 127 |
| Academic Support Center | MX, 124 |
| Accounting | KB, 104 |
| Accounting Services | BR, 134 |
| Accounts Payable | BR, 148B |
| Accounts Receivable | BR, 140 |
| Admissions | EL, Lobby |
| Advisement Center for Undeclared Students | MUC 210 |
| Affirmative Action | BR, 7C |
| African American Cultural Center | CL, 120 |
| African American Studies | HH, 220 |
| Agriculture | SSC, D232 |
| Allied Health Sciences | SSC, D232 |
| Alumni Relations | PAC |
| Art | TR, 208 |
| Arts and Letters, College of | HH, 132 |
| Athletics | DU, 141 |
| Athletics-Academic Services | DU, 201 |
| Athletics-Ticket Office | DU, 141 |
| Athletics-Trainer | DU, 152 |
| Austin Peay Center @ Fort Campbell* | Fort Campbell, Ky. |
| Austin's Diner | CEH |
| Baptist Collegiate Ministry (BCM) | 306 Drane St. |
| Baseball | Raymond Hand Park |
| Basketball-men's | DU, 129 |
| Basketball-women's | DU, 231 |
| Behavioral and Health Sciences, College of | MC, 212 |
| Biology | SSC, D125 |
| Blount Hall | BH |
| Book & Supply Store | CEH |
| Business, College of | KB, 104 |
| Business Law, Economics, Gen. Bus. & Dec. Sciences | KB, 104 |
| Business Office | BR, 134 |
| Cafeteria | MUC |
| Campus Police | SH, 133 |
| Career Services | MUC, 112 |
| Castle Heights | CH |
| Catering Services | MUC, 326E |
| Catholic Student Union* | 744 Franklin St. |
| Center for Teaching and Learning | 325 Drane St. |
| Center of Excellence for Field Biology | SSC, D127 |
| Center of Excellence for the Creative Arts | MMC, 165 |
| Center of Excellence-Music Concert Theater | MMC, 135 |
| Center of Excellence-Music Ticket Office | MC, lobby |
| Center of Excellence-Theater Ticket Office | TR, Lobby |
| Center of Excellence-Zone 3 | HH, 139 |
| Cheerleaders | DU, 141 |
| Chemical Engineering Technology | HSC, 105 |
| Chemistry | SSC, A308 |
| Child Learning Center | SX |
| Christ Centered Student Community (CCSC @ APSU) | College Street |
| Clinical Teaching Experiences, Office of | CX, 228 |
| Coffee House, Einstein Bros Bagels | MUC, 216 |
| College of Arts & Letters | HH, 132 |

| | |
|---|-----------------------------|
| College of Behavioral and Health Sciences | MC, 212 |
| College of Business | KB, 104 |
| College of Education | CX, 210 |
| College of Education-Certification Office | CX, 206 |
| College of Graduate Studies | KB, 203 |
| College of Science & Mathematics | HSC, 105 |
| Communication | MMC, 173 |
| Community School of The Arts | MMC, 137 |
| Computer Science & Information Technology | CX, 304 |
| Counseling Center | EL, 202 |
| Dance Studio | MH Studio |
| Dean of Students | MUC, 206 |
| Dining Services/Chartwells | MUC, 216 |
| Disability Services | MUC, 114 |
| Distance Education | MCR, 104 |
| Downtown Art Gallery* | 116 Strawberry Alley |
| Economics | KB, 104 |
| Education, College of | CX, 210 |
| Educational Opportunity Center | EL, 333 |
| Educational Specialties | CX, 205 |
| Einstein Bros Bagels | MUC, 216 |
| Emerald Hill (apartments) | EH |
| Employee Lounge | BR, 215 |
| English as a Second Language | MCR, 202 |
| Enrollment Management & Academic Support | EL, 207 |
| Environmental Education Center* | (Pickens Road - off campus) |
| Extended Education | MCR, 119 |
| Finance & Administration | BR, 115 |
| Finance, Management & Marketing | KB, 104 |
| Financial Aid | EL, 216 |
| Fraternity and Sorority Affairs | MUC, 208 |
| Food Court | MUC |
| Football | DU, 227 |
| Geographic Information Systems (GIS) | 601 N. 2nd St. |
| Geosciences | MC, 203 |
| Golf - Men's | DU, 102 |
| Golf - Women's | DU, 176 |
| Govs I.D. Card Center | MUC info desk |
| Graduate Admissions | KB, 203 |
| Graduate Studies, College of | KB, 203 |
| Grants & Sponsored Programs | MCR, 108 |
| Greek Life | MUC, 208 |
| Greek Village | 550 Robb Ave. |
| Hand Village | HV |
| Hand Stand Convenience Store (The) | HV, 113 |
| Harvill Hall | HVH |
| Health Services | EL, 104 |
| Health & Human Performance | DU, 268 |
| Help Desk -- Information Technology | FS, 322 |
| Hemlock Semiconductor Building | HSC |
| High School Upward Bound | FS, 400 |
| Hispanic Cultural Center | MUC, 213 |
| History & Philosophy | HH, 340 |
| Honors Program | MH |
| Housing/Residence Life | ML, 121 |
| Human Resources | BR, 7C |
| Information Desk | MUC lobby |
| Information Technology | BR, 12A |
| Institutional Research & Effectiveness | EL, 214 |
| Institutional Review Board | KB, 203 |
| Internal Audit | 505 York St. |
| International Education | HH, 127 |
| Languages & Literature | HH, 115 |
| Learning Resource Center | LB |
| Library (Felix Woodward Library) | LB |
| Management & Marketing | KB, 104 |
| Mathematics and Statistics | CX, 304 |
| Meacham Apartments | MA |
| Medical Technology | SSC, D125 |
| Memorial Health | MH |
| Middle College | MX |
| Military Science & Leadership | MH, 110 |
| Military Student Center | MUC, 120 |
| Miller Hall | ML |
| Music | MMC, 139 |
| Music-Ticket Office | MMC, lobby |
| Noncredit Programs | MCR, 118 |
| Nursing, School of | MC, 218 |
| Observatory* | 1991 Pickens Rd. |
| Office of the Registrar | EL, 316 |
| Pace Alumni Center at Emerald Hill | PAC |
| Peay Pod Convenience Store | MUC, 214 |

| | |
|---|-----------------|
| PELP and Leadership Studies | CL, 215A |
| Physical Plant | SH, 101 |
| Physics & Astronomy | SSC, B332 |
| Political Science | CL, 143 |
| Post Office | MUC, 119 |
| President's Office | BR, 125 |
| Printing Services | LB, 124 |
| Psychology | CL, 205 |
| Public Relations & Marketing | BR, 206 |
| Public Safety/Campus Police | SH, 133 |
| Purchasing | 505 York St. |
| Radio Station - WAPX | MMC, 181 |
| Registrar, Office of the | EL, 316 |
| ROTC | MH, 110 |
| School of Nursing | MC, 218 |
| Science & Mathematics, College of | HSC, 105 |
| Sevier Hall | SVH |
| Shipping & Receiving | SH, 167 |
| Soccer | DU, 228 |
| Social Work | CL, 140 |
| Social Work - DCS Grant | CL, 103 |
| Sociology | CL, 143 |
| Softball | DU, 228 |
| Sports Information | DU, 132 |
| Student Affairs | MUC, 206 |
| Student Government Association | MUC, 115 |
| Student Life & Leadership | MUC, 211 |
| Student Newspaper (The All State) | MUC, 111 |
| Student Publications | MUC, 111 |
| Student Transitions | MX, 240 |
| TECTA | CX, 101 |
| Telephone Services | BR, 133 |
| Tennessee Small Business Center | MCR, 111 |
| Tennis, men's & women's | TC |
| Testing Center | EL, 202 |
| The All State | MUC, 111 |
| The Hand Stand Convenience Store | HV, 113 |
| Theater & Dance | TR, 208 |
| Tickets, Athletics | DU, 141 |
| Tickets, Creative Arts - Music & Theater | MMC lobby |
| Title III Grant | 325 Drane St. |
| Track & Cross Country | DU, 317 |
| Transfer Center | EL, 126 |
| Tri-County Upward Bound | MCR, 210 |
| TRIO Student Support Services | EL, 337 |
| Two Rivers Apartments | EH |
| University Advancement | BR, 216 |
| University Attorney, Office of the | BR, 151 |
| University Center, Information Desk | MUC, lobby |
| University Facilities | MUC, 207 |
| University Recreation | REC, 112 |
| Upward Bound (High School) | 400 Ford St. |
| Veterans Affairs | EL, 135 |
| Veterans Upward Bound | MCR, 212 |
| Volleyball-Women's | DU, 178 |
| Water Education for Teachers (W.E.T.) | SSC, D132 |
| WAPX-FM | MMC |
| Wesley Foundation | 510 College St. |
| Wilbur N. Daniel African American Cultural Center | CL, 120 |
| Women's Studies | HH, 144 |
| Yearbook | MUC, 111 |
| Zone 3 | HH, 139 |

Austin Peay Center @ Fort Campbell*

| | |
|--|----------------------------------|
| Automotive Engineering Technology | Bldg. 202, Army Education Center |
| Construction Engineering Technology | Bldg. 203, Bastogne Ave. |
| Criminal Justice/Homeland Security* | Bldg. 203, Bastogne Ave. |
| Electronics Engineering Technology* | Bldg. 202, Army Education Center |
| Engineering Technology | Bldg. 202, Army Education Center |
| Institute for Global Security Studies | Bldg. 203, Bastogne Ave. |
| Management Technology | Bldg. 203, Bastogne Ave. |
| Professional Studies* | Bldg. 203, Bastogne Ave. |
| Public Management | Bldg. 203 Bastogne Ave. |
| Restaurant Management/Culinary Arts | Bldg. 202, Army Education Center |
| School of Technology & Public Management | Bldg. 202, Army Education Center |

*Off-campus location not shown on map.

Special Note:

This map is accurate as of its publishing date. Changes may have occurred since publication. For the latest updates, go to www.apsu.edu.

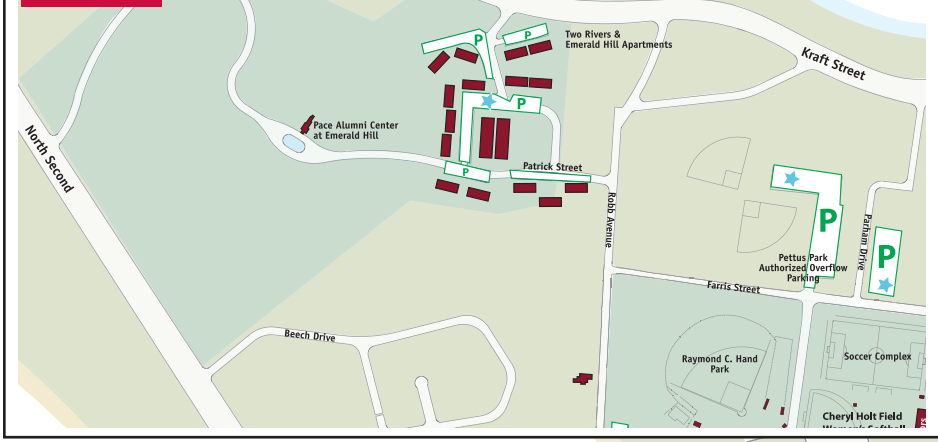
CAMPUS MAP

EFFECTIVE DEC. 1, 2011



Austin Peay
State University

INSET A



Refer to inset A Refer to inset A Refer to inset A

Parking

- P Faculty & Staff Parking
- P Residential Parking
- P Residential Parking
- P Commuters, Emerald Hill & Two Rivers Parking
- P Disabled Parking
- P Visitor or 30-Minute Parking**
- P Construction Zone

** Visitor and 30-minute parking is indicated in pink for illustration purposes only. Visitor and 30-minute spaces are painted white with the words "Visitor" or "30 Minute" at each location.

Smoking Areas

- Non-Smoking area
- ★ Designated smoking areas

NOTE: Use of smoke-free tobacco products is prohibited within a 30-foot perimeter of any facility.

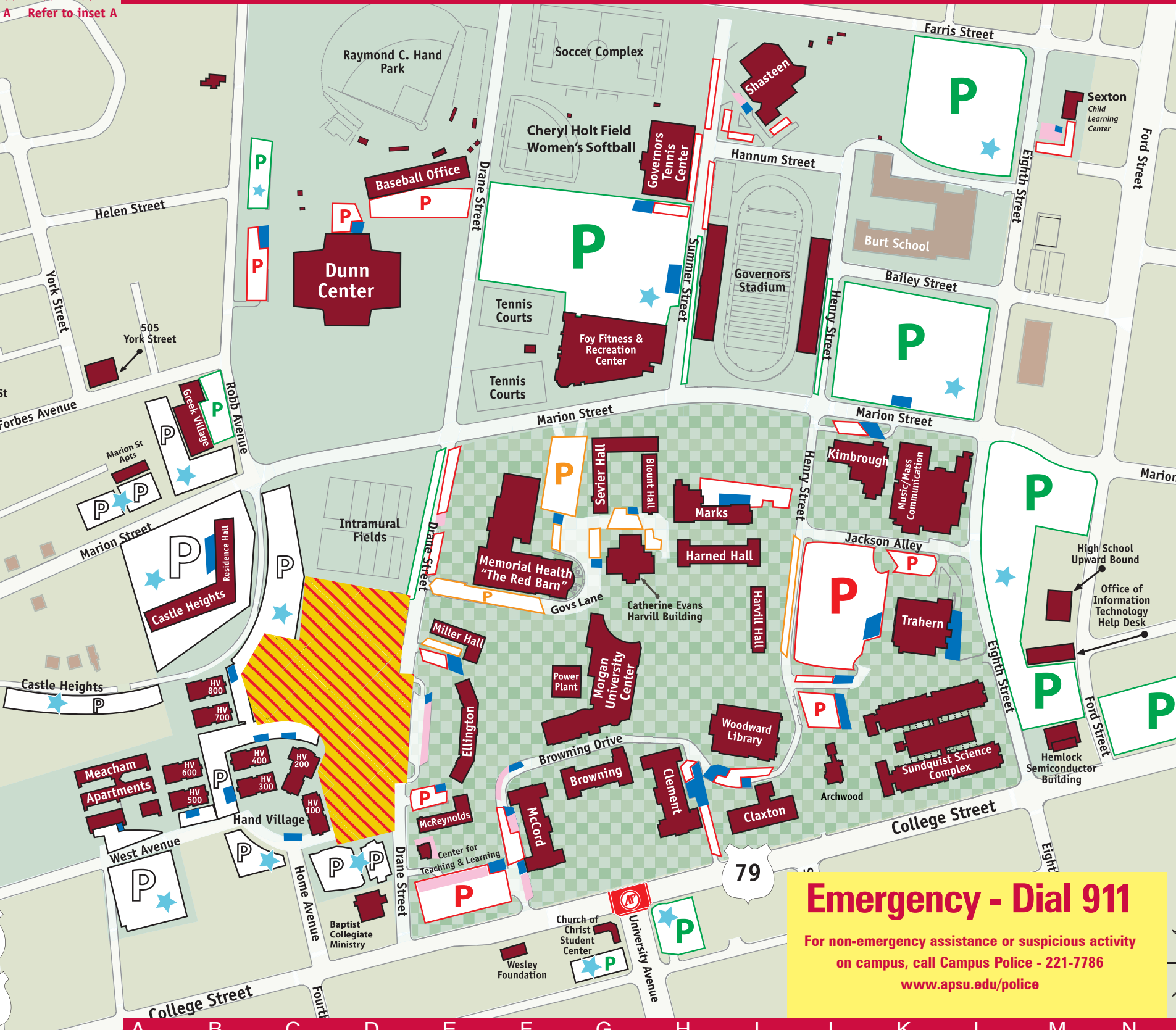
Austin Peay State University is a smoke-free campus. Smoking is allowed only in designated parking lots as indicated on this map.

Building names and abbreviations

The grid indicates the area in which each building is located.

| | | |
|---|---|---|
| BH Blount Hall BR Browning Administration Building CEH Catherine Evans Harvill Building CH Castle Heights CL Clement CX Claxton DU Winfield Dunn Center EH Emerald Hill Apartments EL Ellington FC Austin Peay Center @ Fort Campbell* HH Harned Hall HSC Hemlock Semiconductor Building HV Hand Village HVH Harvill Hall KB Kimbrough LB Library (Woodward Library) MA Meacham Apartments MC McCord MCR McReynolds | H-9 G-14 H-10 B-10 H-14 I-14 D-5 Inset A E-13 N/A I-10 M-13 C-14 I-11 K-8 I-13 A-14 F-15 E-14 | MH Memorial Health (The Red Barn) ML Miller Hall MMC Music/Mass Communication MUC Morgan University Center MX Marks PAC Pace Alumni Center at Emerald Hill PP Power Plant REC Foy Fitness and Recreation Center SH Shasteen SSC Sundquist Science Complex SVH Sevier Hall SX Sexton (Child Learning Center) TC Tennis Center TR Trahern F-10 E-11 L-9 G-12 I-9 G-12 G-7 I-2 L-13 G-9 M-2 H-3 K-11 |
|---|---|---|

*Off-campus location not shown on map.



Emergency - Dial 911

For non-emergency assistance or suspicious activity on campus, call Campus Police - 221-7786

www.apsu.edu/police