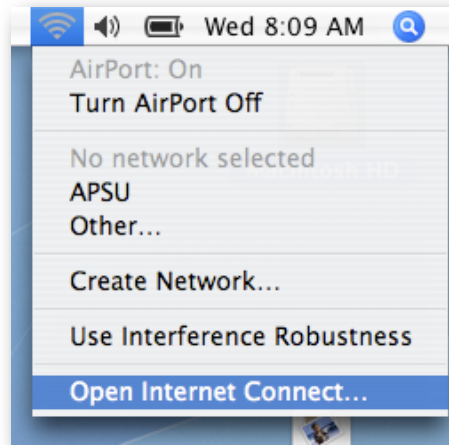
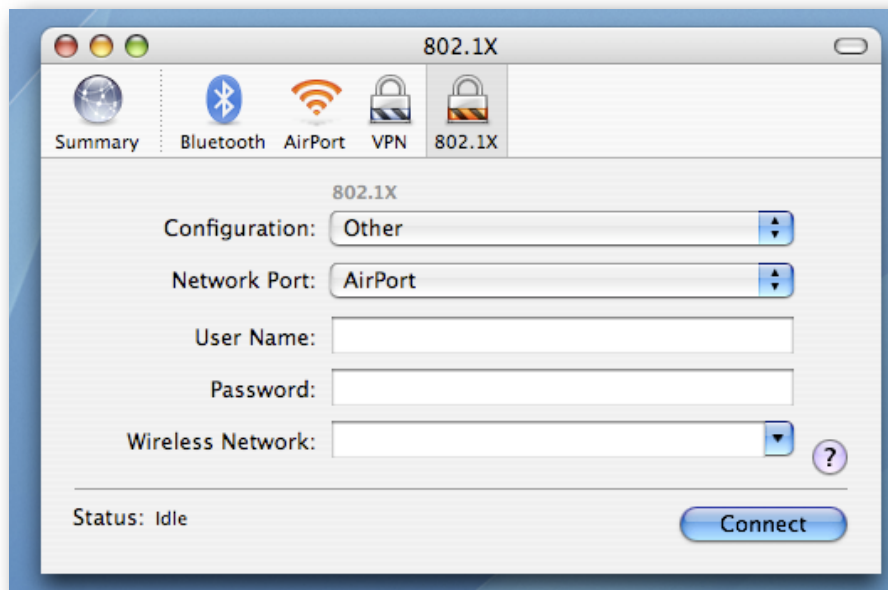


Instructions to connect to APSU wireless for Faculty and Staff from a Macintosh.

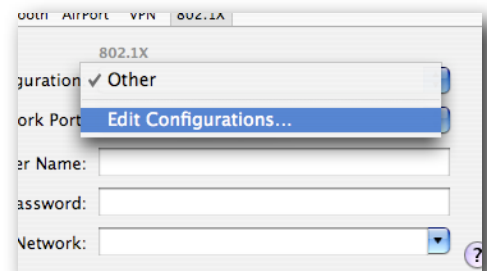
1. In the menu bar, select Airport and pull down to Open Internet Connect.



2. In Internet Connect, click on 802.1x. If you don't see the icon, click on File then New 802.1X Connection.



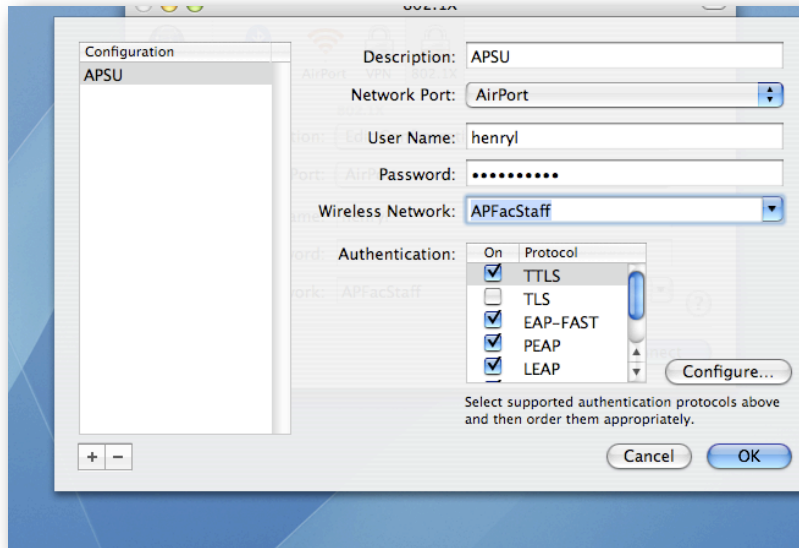
3. From the pop-up menu, select Edit Configurations.



Any questions can be directed to the APSU Helpdesk at 221-4357.

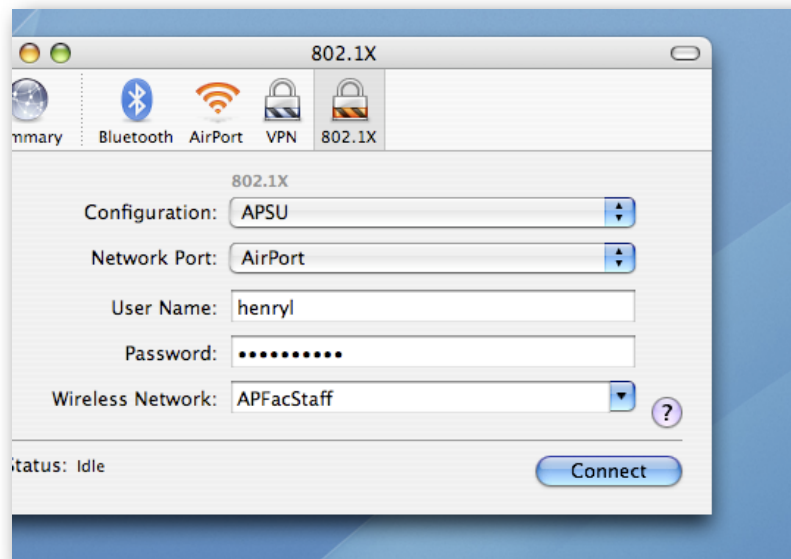
Instructions to connect to APSU wireless for Faculty and Staff from a Macintosh.

4. Make the screen look like the one below. Re-ryl with your username. Then click OK.



screen look below. Re-ryl with your username. Then click

5. You may Connect and the APSU Network.



then click connect to Wireless

Instructions to connect to APSU wireless for Faculty and Staff from a Macintosh.

6. If you use this mainly on campus you should stay connected, but if you are on and off campus with several different wireless setups, you may have to open Internet Connect again and click on Connect.

Any questions can be directed to the APSU Helpdesk at 221-4357.