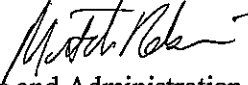


AP Austin Peay
State University
 Space Allocation Committee


TO: Tim Hall
 President

FROM: Mitch Robinson, Chair 
 Vice President for Finance and Administration

SUBJECT: Space Allocation Committee

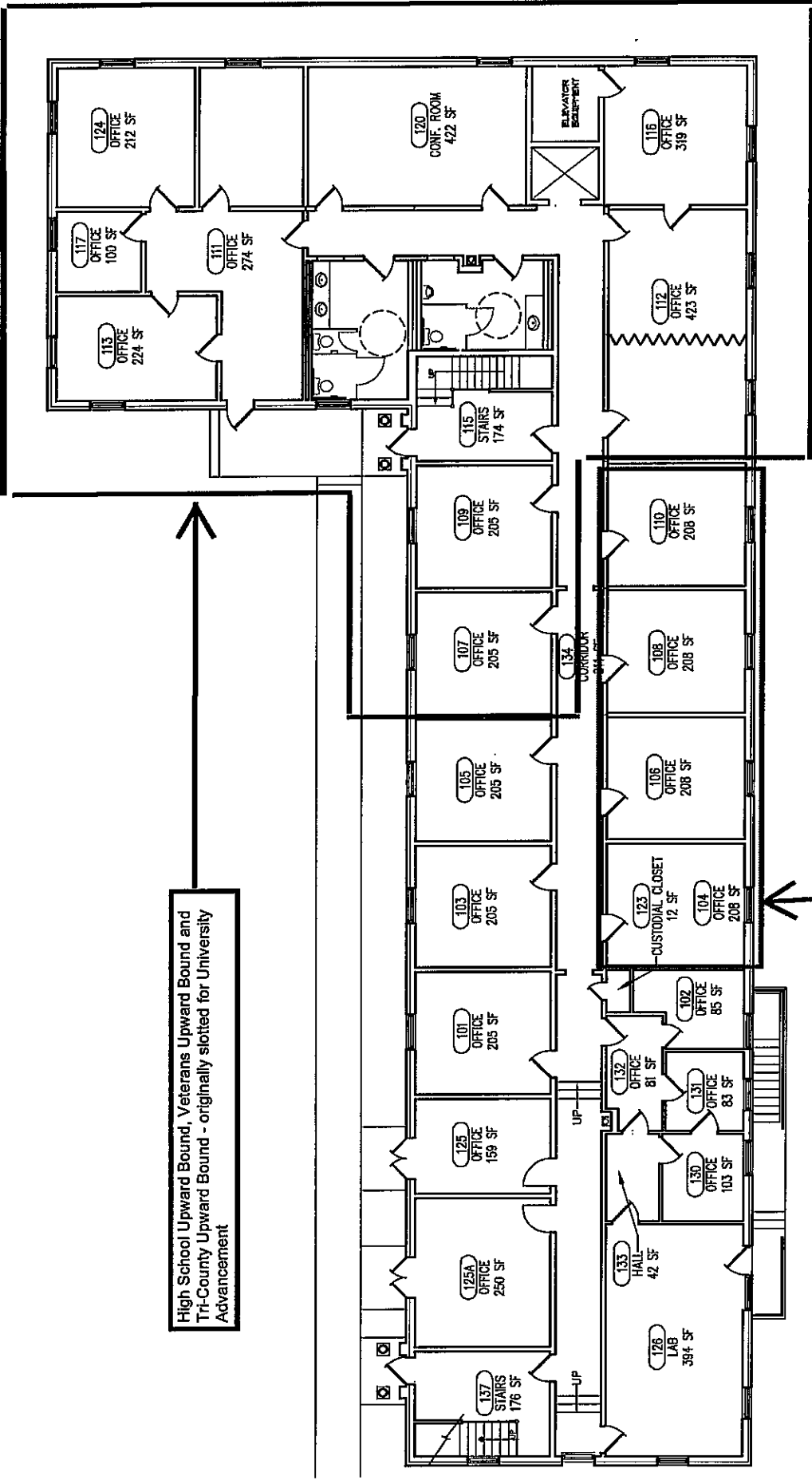
DATE: March 28, 2008

The Space Allocation Committee has reviewed and deliberated upon the existing or proposed space request listed below. The committee's recommendations for your consideration are provided below.

| Space Request | Description of Request | Approved |
|---------------|---------------------------------------------------------------------------------------------------------------------------------------------------------------------------------------------------------------------------------------------------------------------------------------------------------------------------------------------------------------------------------------------------------------------------------------------------------------------------------------------------|-------------------------------------------------------------------------------------------------------------------|
| Trio Programs | Currently Veterans Upward Bound and Tri-County Upward Bound are housed on Castle Heights Street. These houses will be demolished for student housing in the near future. High School Upward Bound is housed on Ford Street. It is the request of the committee the Trio programs move into the McReynolds building in the space originally slotted for University Advancement. The programs will be in the same building as Distance and Extended Education, the department to which they report. |  <hr/> Tim Hall, President |

Should you decide to accept the committee's recommendation, please sign and date box provided for your signature. If you decide not to approve the space request, please write "declined" in the box for your signature.

High School Upward Bound, Veterans Upward Bound and
Tri-County Upward Bound - originally slotted for University
Advancement

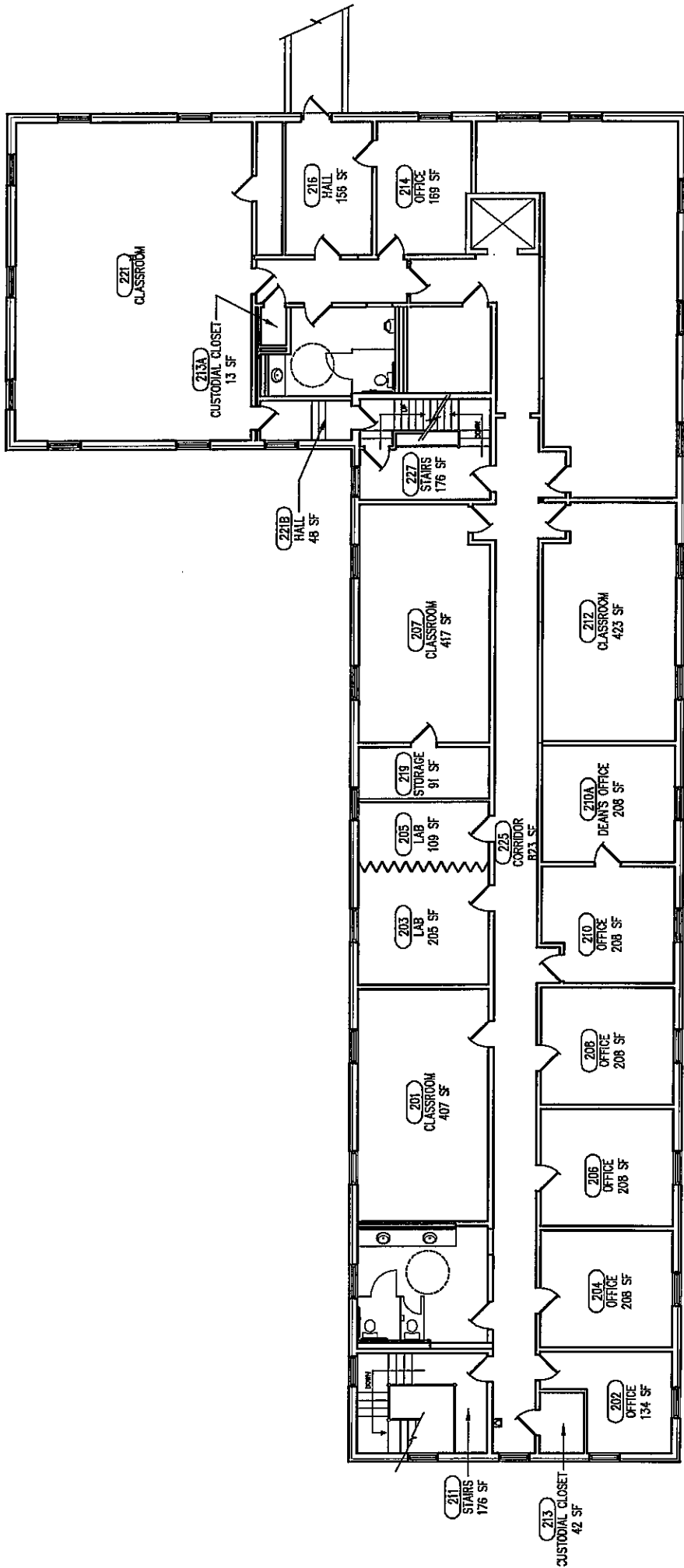


Grants



SCALE 3/8"=1'-0"

1 FIRST FLOOR PLAN



2 SECOND FLOOR PLAN SCALE 3/8"=1'-0"